

INSTALLATION GUIDE



COREMAX  **48**

Table of Contents

| | |
|-----------------------|-------|
| Parts List | 1 |
| Getting Started | 2 |
| Step 1 | 3-4 |
| Step 2 | 5-6 |
| Step 3 | 6-8 |
| Step 4 | 8-9 |
| Step 5 | 10-11 |
| Step 6 | 11-12 |
| Step 7 | 13-14 |
| Step 8 | 14-15 |
| Step 9 | 16 |
| Step 10 | 17 |
| Step 11 | 17-18 |
| Step 12 | 19 |
| Step 13 | 19 |

Parts List



Part 1
Lower Blower Bracket



Part 2
Wind Manifold



Part 3
HDPE Turf Guard Mat



Part 4
Extension Blower Arm



Part 5
Core Deflection Guard



Part 6
Blower Bracket



Part 7
Stabilization Bar



Part 8
Blower Hoses



Part 9
Air Deflecting Plate



Part 10
Extension Arm Bracket



Part 11
Collection Box



Part 12
Bungee Cord

Getting Started

- Before installing your CoreMax48 you MUST ensure that the ProCore648 machine is back to Factory Settings. If ProCore648 is not to factory specifications CoreMax48 may not work properly. Refer to the "Factory Setting" Checklist in CoreMax48 Owner's Manual.
- Remove the ProCore648 Rear Hood (Part# 110-1494) and set aside. You will place back on after CoreMax48 installation.
- Remove all tine blocks from ProCore648. You will re-install later.
- Remove side shields from ProCore648 (Part#105-1069). These parts will not be re-used.
- Set up your ProCore648 on lift or ramps. Use of a Lift is strongly recommended.
- Remove ProCore648 Turf Guard and NI-HF nuts. (Image a) You will be re-using the nuts.
- Remove all debris off of under carriage of ProCore648.

General Notes

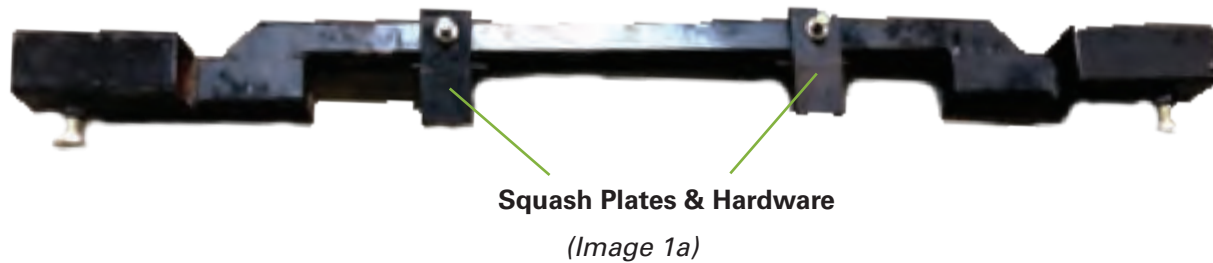


- During instructions for installation directions of "left" or "right" are always done from standing behind the coring head of the ProCore648 and facing the operator. (*Image a*)
- Unless noted the necessary hardware needed for each component come pre inserted into the screw hole.

STEP 1

Lower Blower Bracket (Part 1)

NOTE: Lift should be set at comfortable height for this step.



- Remove the 2 frame squash plates and the 3/8" x 3 1/2" hardware from the Lower Blower Bracket. You will re-install later. (Image 1a)



**Weld Closest to 2 Tires
Away from Operator**



(Image 1c)

- Standing at the rear of the machine and facing the coring head place the Lower Blower Bracket underneath the ProCore648 directly against the weld that is closest to the tires. Outside bolts should be facing the operator. (Images 1b & 1c)

STEP 1 Continued...

Lower Blower Bracket



(Image 1d)

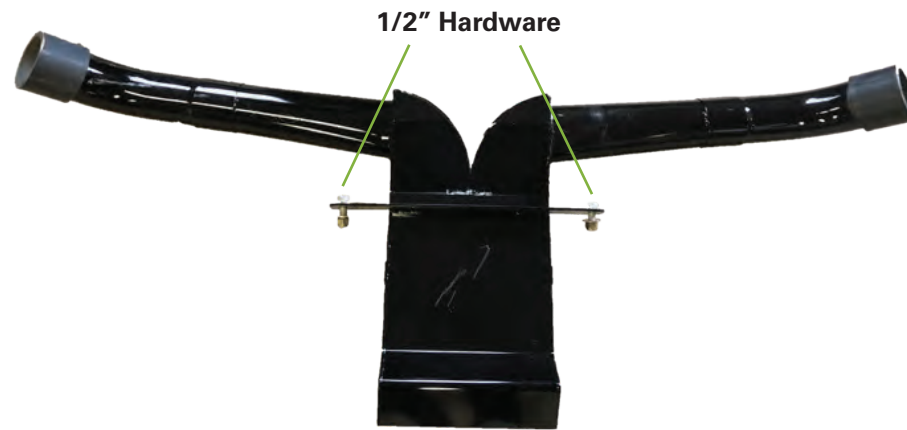
WARNING: Be aware of ProCore648 hydraulic line when installing Lower Blower Bracket. It is recommended to zip tie the hydraulic lines together to avoid contact with squash plate.

- Re-install the squash plates on the side of the Lower Blower Bracket in line with the aerifier frame and perpendicular to the Lower Blower Bracket. Place one washer under the bolt head and insert from underneath Lower Blower Bracket and through to the top of the Lower Blower Bracket. Secure the top of the bolt with an additional washer and screw. Repeat on other side. (Image 1d)

STEP 2

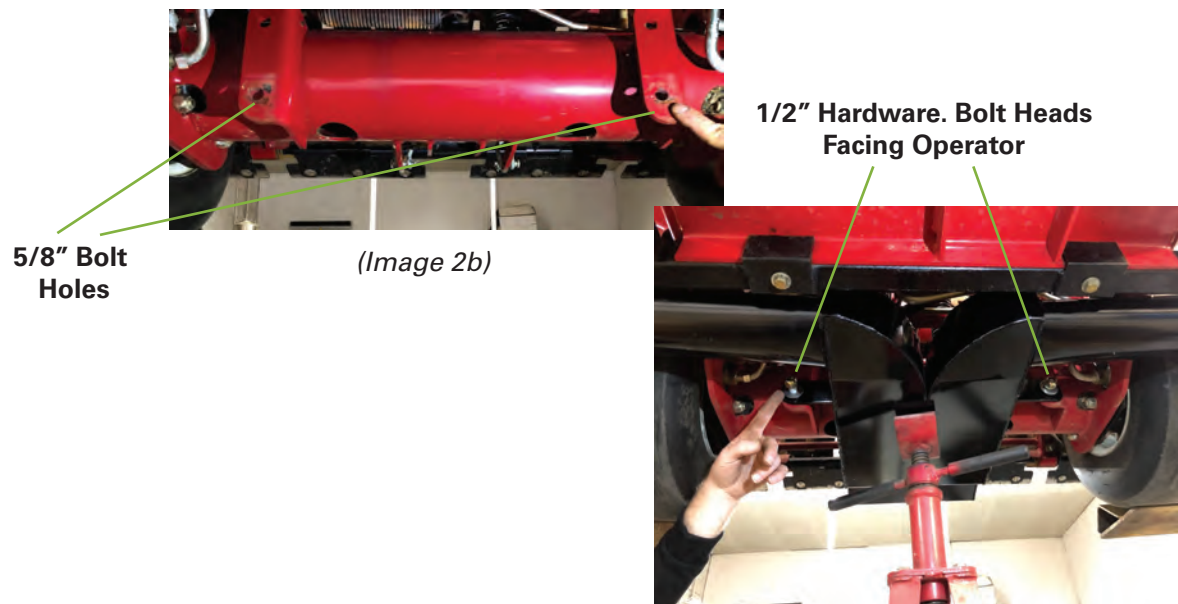
Wind Manifold (Part 2)

NOTE: Lift should be set at comfortable height for this step. This step will require 2 individuals or screw jack.



(Image 2a)

- Remove the 1/2" hardware from the Wind Manifold and set aside. You will re-install later. (Image 2a)



(Image 2c)

- Using the existing ProCore648 open 5/8" bolt holes align the wind manifold with the manifold blow pipes against the Lower Blower Bracket (Images 2b and 2c)
- Using a screw jack to support the Wind Manifold fasten the 1/2" bolts and washers into the ProCore648 frame plates-one on the left and one on the right. (Image 2c)

STEP 2 Continued...

Wind Manifold



(Image 2d)

1/2" Hardware. Bolt Heads
Facing Operator

- The bolts should be inserted with the bolt head facing the operator. (Image 2d)
- Take care before final tightening to align the manifold with straight line of 648 frame.

STEP 3

Install HDPE Turf Guard Mat (Part 3)

NOTE: Lift should be lowered to comfortable height for this step of installation. Determine agronomic impact by choosing one of the four HDPE Turf Guard Mats (18, 24, 30 and 36). Tine Block should match the mat of your choice.

HDPE Turf Guard Mat
Lip Facing Up



(Image 3a)

- With the lip located at the back of the mat facing up mount the HDPE Turf Guard Mat to the ProCore648 studs that previously held the turf guard in place. **(Image 3a) IMPORTANT: LIP MUST BE FACING UP**

STEP 3 Continued... *Install HDPE Turf Guard Mat*



- Reinstall Turf Guard Clamps (ProCore648 Part #110-4274-03). (Q:4) **(Image 3b)**
- Use the Steel Spacer Plates (Part 13) corresponding to each Turf Guard Clamp Fasten with 1 washer and 1 NI-HF Nut and hand tighten. **(Image 3c)**
- Starting in the center of the HDPE Turf Guard Mat and working your way out install the spring backing tine by sliding into proper alignment underneath the Turf Guard Clamp **(Image 3b)**. Note, springs are not required but highly recommend.
- Tighten all nuts from center to sides.

STEP 3 Continued... *Install HDPE Turf Guard Mat*

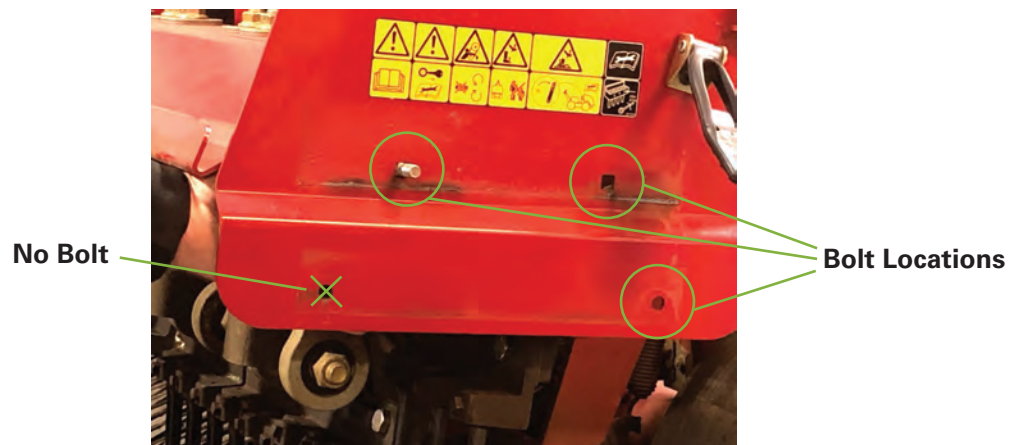


(Image 3d)

- Re-install the tine blocks corresponding to HDPE Turf Guard Mat. To ensure tines are working properly manually work the ProCore648 belt with your hand. The tines should go directly through the HDPE mat without hitting the sides of the mat. (Image 3d)

STEP 4 *Extension Blower Arms (Right and Left) (Part 4)*

NOTE: ProCore648 should be on ground level for this step. Arms are specific to the right and left side.



(Image 4a)

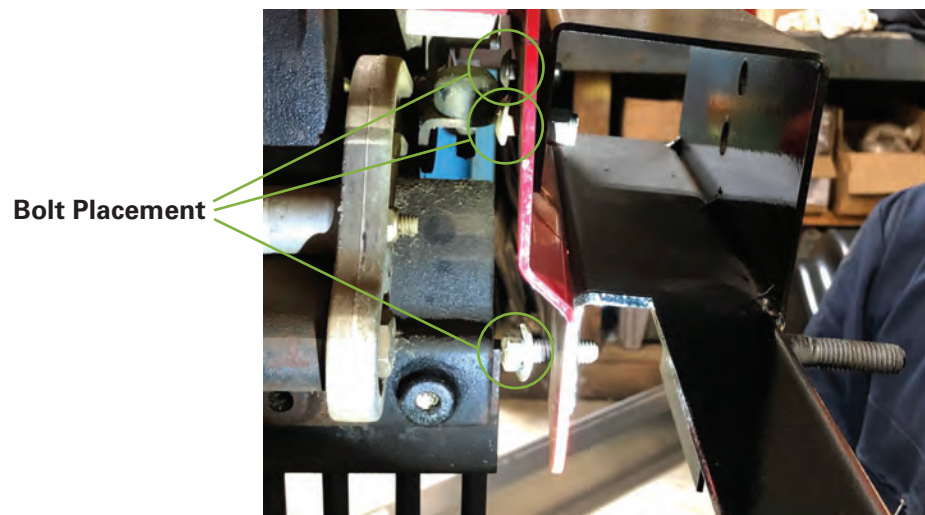
- Utilizing the top two (2) square holes on the ProCore648 insert the two (2) 3/8" x 1" carriage bolts. (Image 4a)
- Utilizing the lower RIGHT round hole insert the one (1) 3/8" x 1" bolt. There should be no bolt inserted into the bottom left hole. (Image 4a)

STEP 4 Continued... *Extension Blower Arms (Right and Left)*



(Image 4b)

- Install Extension Blower Arms with the blower tube facing towards the operator. *(Image 4b)*



(Image 4c)

- Insert washer and nut on all three (3) bolts and finger tight. *(Image 4c)*
- Repeat on other side.

IMPORTANT: *Leave the last bolt out and do not tighten the inserted three bolts until after Step 5 is completed.*

STEP 5 *Core Deflection Guard (Part 5)*



(Image 5a)

- Place Core Deflection Guard on Front of ProCore648 and wrap around to each side of the ProCore648.
(Image 5a)



(Image 5b)

IMPORTANT: The Core Deflection Guard Bracket **MUST** go on the outside of the Extension Blower Arm. *(Image 5b)*

STEP 5 Continued... *Core Deflection Guard*

Bolt through
ProCore648 to
Extension Blower
Then Through Core
Deflection Guard.



(Image 5c)

- Insert the 4th Extension Blower Arm 3/8" x 1" bolt through the inside of the ProCore648 frame then the Extension Blower Arm and finally through the Core Deflection Guard. **(Image 5c)**
- Tighten all four bolts on the Extension Blower Arms.
- Repeat on other side.
- To see video on installing Core Deflection Guard go to turfmeetstechnology.com/ecotutorial.

STEP 6 *Blower Bracket (Right and Left) (Part 6)*

NOTE: ProCore648 should be on ground level for this step. Brackets are NOT specific to the right and left.



(Image 6a)

- Slide bottom of Blower rack into the outside opening of the Lower Blower Bracket (Part 1). **(Image 6a)**

STEP 6 Continued... *Blower Bracket (Right and Left)*



(Image 6b)

- Blower bracket on the left side (Facing operator) should be inserted fully into the blower bracket. **(Image 6b)**



(Image 6c)



(Image 6d)

- Blower bracket on the right side (Facing operator) should stick out 2" to allow for proper removal of the ProCore648 Belt Cover. **(Image 6c and 6d)**
- Tighten 5/8" x 1 1/2" SAE Bolt on both sides.

STEP 7 Stabilizer Bar (Part 7)

NOTE: ProCore648 should be on ground level for this step. Bars are NOT specific to the right and left.



Stabilizer Bar

(Image 7a)

- Connect the Stabilizer Bar from the Blower Rack (Part 6) to the ProCore648. (Image 7a)



Blower Rack

Stabilizer Bar

(Image 7b)

- Using the 3/8" x 3 1/2" hardware attach the Stabilizer Bar underneath the Blower Rack and finger tight. (Image 7b)
- Repeat on the other side.

STEP 7 Continued... Stabilizer Bar



(Image 7c)

- Using the square U-bolt hardware attach the Stabilizer Bar to the ProCore648 frame and finger tight. *(Image 7c)*
- Repeat on other side.
- Once all hardware is on both sides tighten all bolts.

STEP 8 RedMax Backpack Blowers (8500 or 8550)



(Image 8a)

- Remove shoulder straps and all hardware from the RedMax Backpack Blower.
- Place carry handle of backpack blower into top supporting angle bracket. *(Image 8a)*

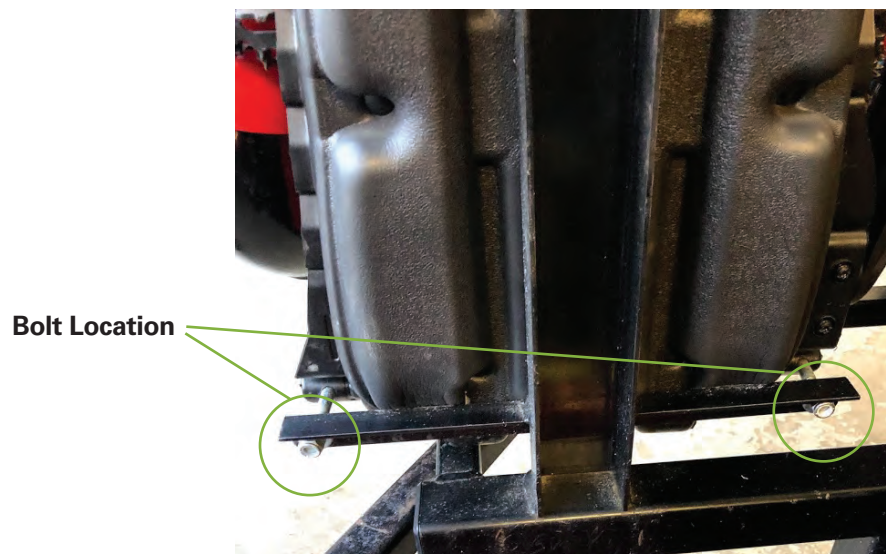
STEP 8 Continued... RedMax Backpack Blowers (8500 or 8550)



Blower Swivels Must
Be Facing Forward

(Image 8b)

- Blower swivel tubes must be facing out to receive hoses that attach to the manifold and side mounts in Step 9. (Image 8b)



Bolt Location

(Image 8c)

- Insert the two (2) 2 3/8" x 2 1/2" bolts into bottom shoulder strap clip holes and through to the Blower Rack. Take care to make sure the nut is on the inside closest to the ProCore648. **Tighten carefully so as the bolt protrudes just through the end of the lock nut.** Doing so will not break plastic frame of blower. (Image 8c)
- Repeat above steps for all 4 blowers.

STEP 9 *Blower Hoses (Part 8)*



(Image 9a)

- On the left side of the machine and starting with the rear mounted blowers (closest to the back of the machine) connect the 37" hose from the blower to the manifold and tighten with hose clamps. This hose is marked as "LS short." (Image 9a)
- Connect the front blower to the side mounts with the 47" hose and tighten with hose clamps. This hose is marked as "LS long." (Image 9a)
- On the right side of the machine and starting with the rear mounted blowers (closest to the back of the machine) connect the 33" hose from the blower to the manifold and tighten with hose clamps. This hose is marked as "RS short." (Image 9a)
- Connect the front blower to the side mounts with the 51" hose and tighten with hose clamps. This hose is marked as "RS long." (Image 9a)

IMPORTANT: Take care to make sure the hoses are seated completely covering the rubber bushings before tightening hose clamps.

STEP 10 *Air Deflecting Plates (Part 9)*

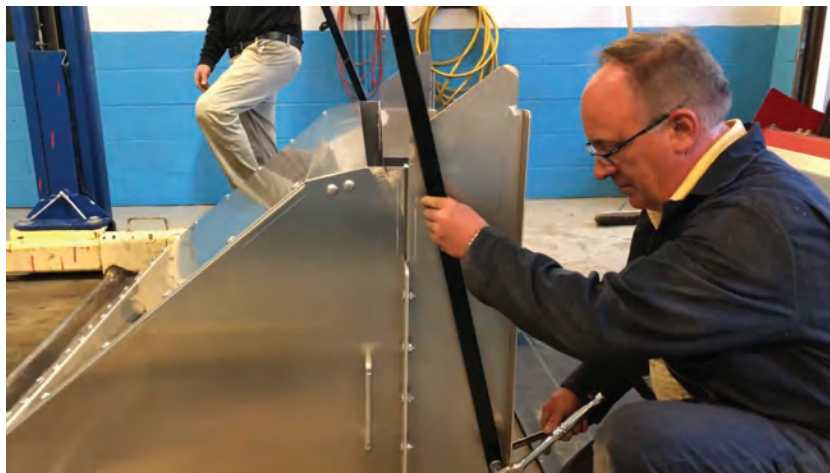


(Image 10a)

- With the Collection Box on its back remove ONLY the nuts of the top two carriage bolts.
- Install the Air Deflecting Plate on the inside of the Collection Box (Part 14) taking care that the plate's 45 degree angle is facing down or toward the rear of the Collection Box.
- Refasten carriage bolt with nut and tighten. (Image 10a)
- Repeat on each side.

STEP 11 *Extension Arm Bracket (Right and Left) (Part 10)*

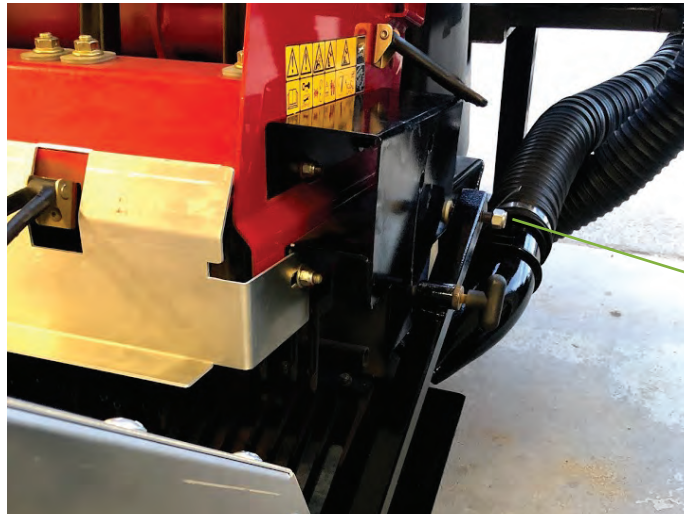
NOTE: Bars are specific to the right and left and are marked accordingly.



(Image 11a)

- Place Collection Box (Part 11) on its back. (Image 11a)
- Do not tighten at this time to allow for flexibility of install to the side brackets on Step 11. (Image 11a)

STEP 11 Continued... *Extension Arm Bracket (Right and Left)*



Side Bracket Stud

(Image 11b)

- Install side arms to the Collection Box utilizing the attached hardware.
- With bolt head facing bolt through Extension Bracket with plastic washer on either side of the Extension Bracket. Continue bolt through collection box hole. Insert plastic washer and lock nut on the inside of the Collection Box and tighten so the arm is taunt enough to move back and forth. **(Image 11b)**
- Repeat on both sides.



(Image 11c)

- Move collector box onto HDPE Turf guard collector mat.
- Attach left and right arms to the 1/2" stud located on each side bracket. **(Image 11c)**
- Use plastic washers between the arm and side bracket and between side arm and 1/2" lock nut.
- Tighten to snug fit to allow movement of containment box.

STEP 12 *Bungee Chord (Part 11)*



(Image 12a)

- Attach the bungee to the 2 CoreMax48 handles located in the front of the Collection Box. *(Image 12a)*

STEP 13 *Re-Installation of ProCore648 Cover*

- Re-install ProCore648 Rear Hood. For instructions on re-installation refer to ProCore648 Owner's Manual.



1-888-408-5433

info@synateksolutions.com

**737 Hagey Center Dr.
Souderton, PA 18964**